

APPENDIX F
NOISE DATA

**Noise Levels at LT-1
~115 feet from the Center of Highway 101
Tuesday, September 25, 2007**

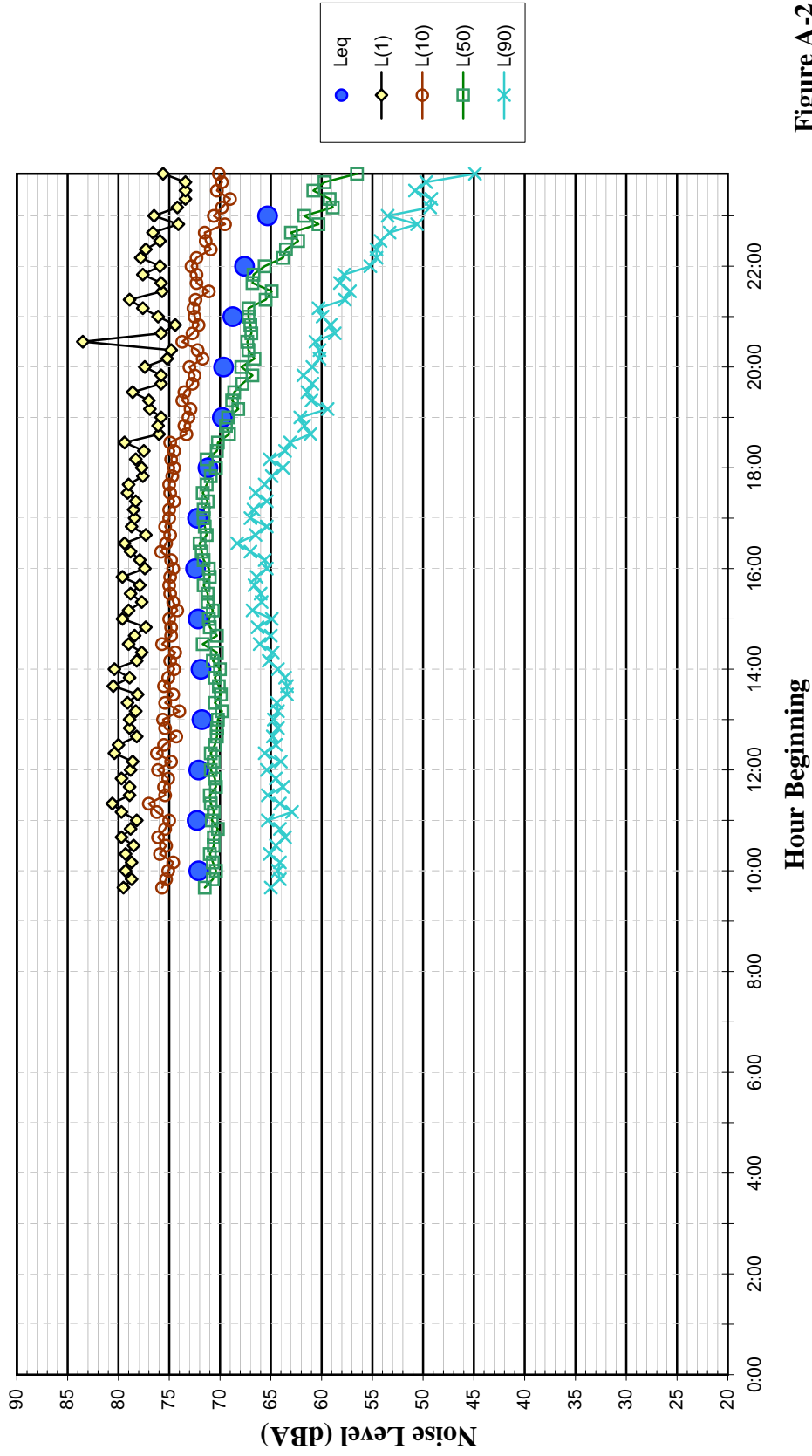


Figure A-2

Noise Levels at LT-1
~115 feet from the Center of Highway 101
Wednesday, September 26, 2007

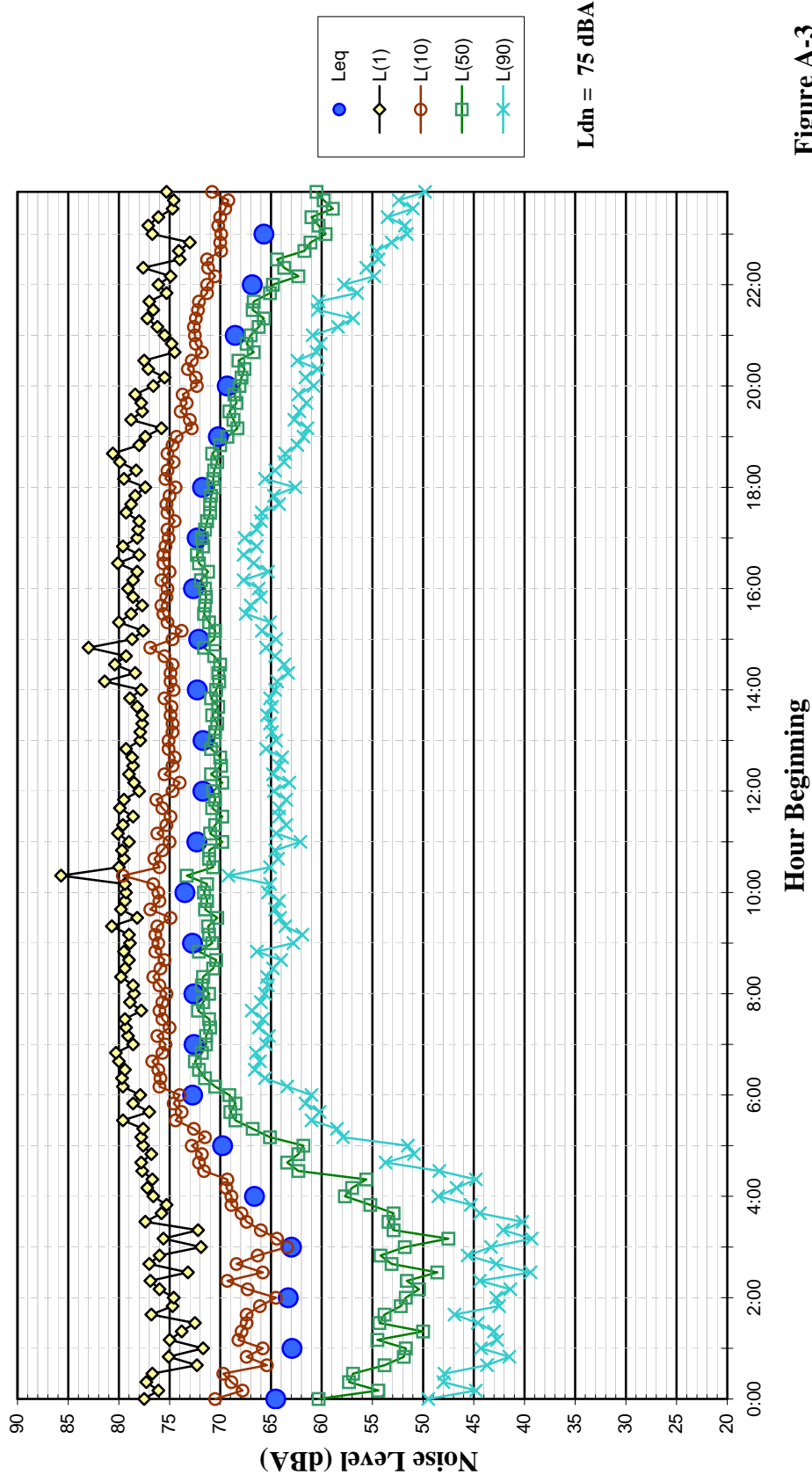


Figure A-3

**Noise Levels at LT-1
~115 feet from the Center of Highway 101
Thursday, September 27, 2007**

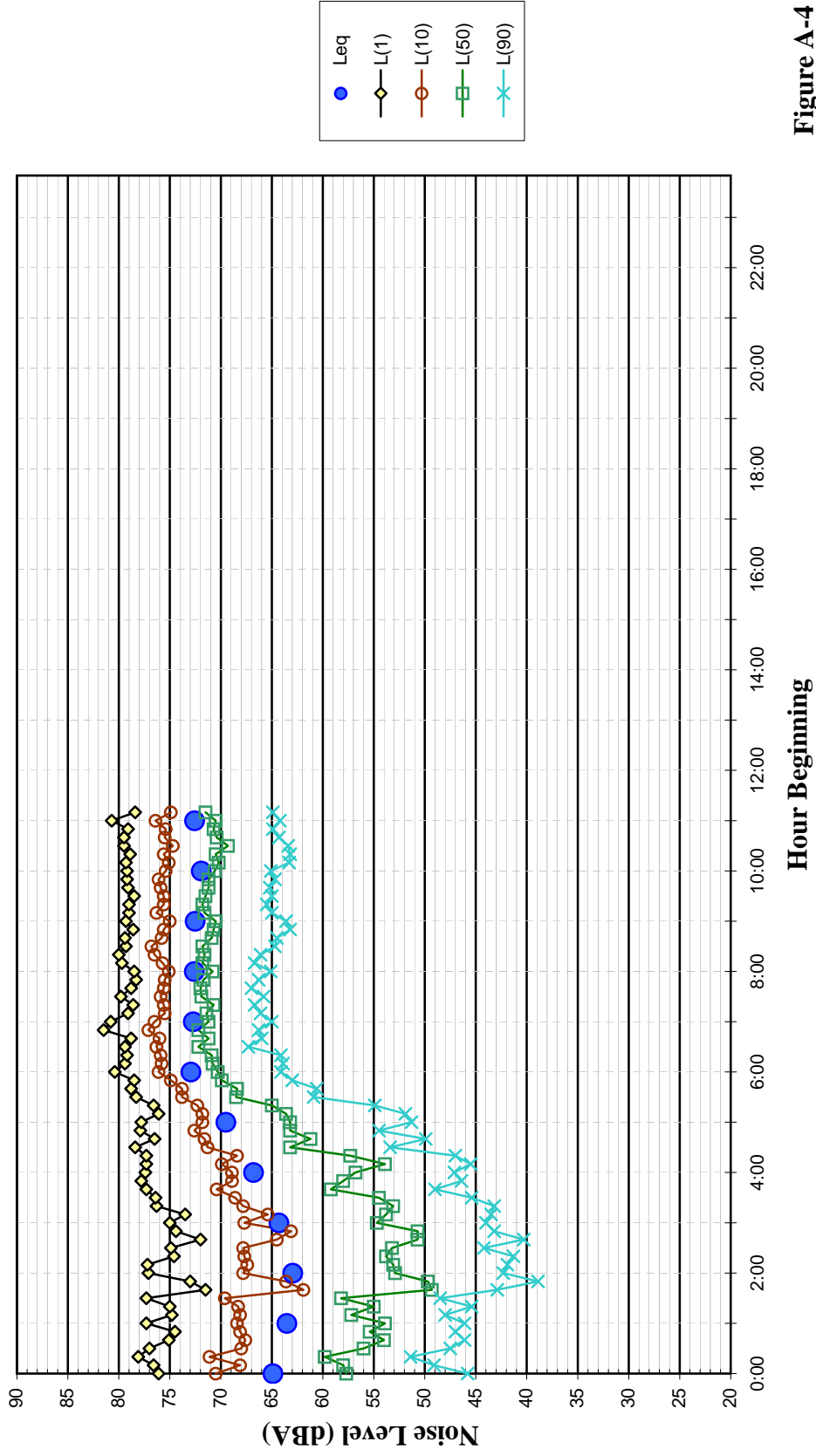


Figure A-4

**Noise Levels at LT-2
~135 feet from the Center of Healdsburg Avenue
Tuesday, September 25, 2007**

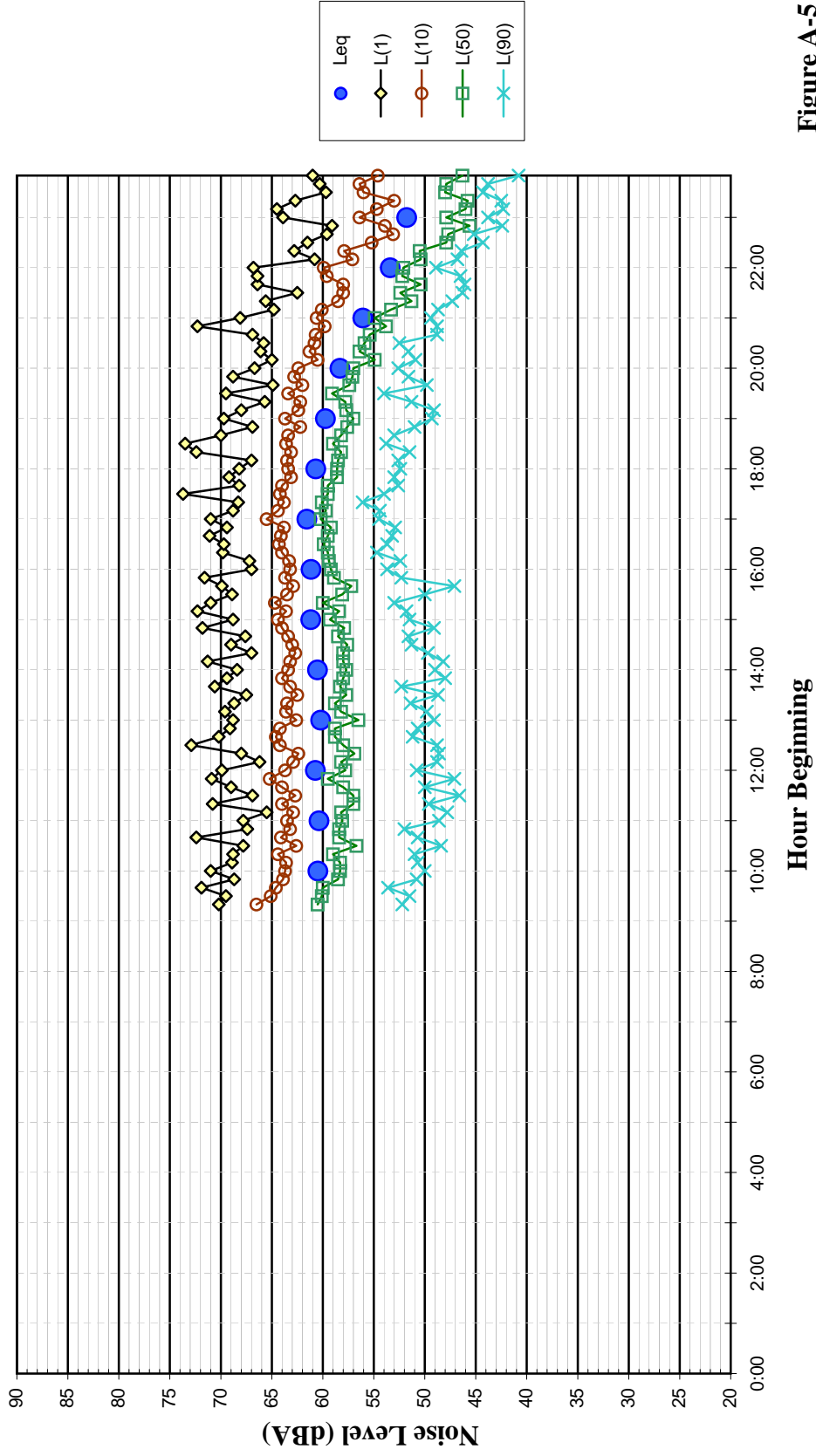


Figure A-5

**Noise Levels at LT-2
~135 feet from the Center of Healdsburg Avenue
Wednesday, September 26, 2007**

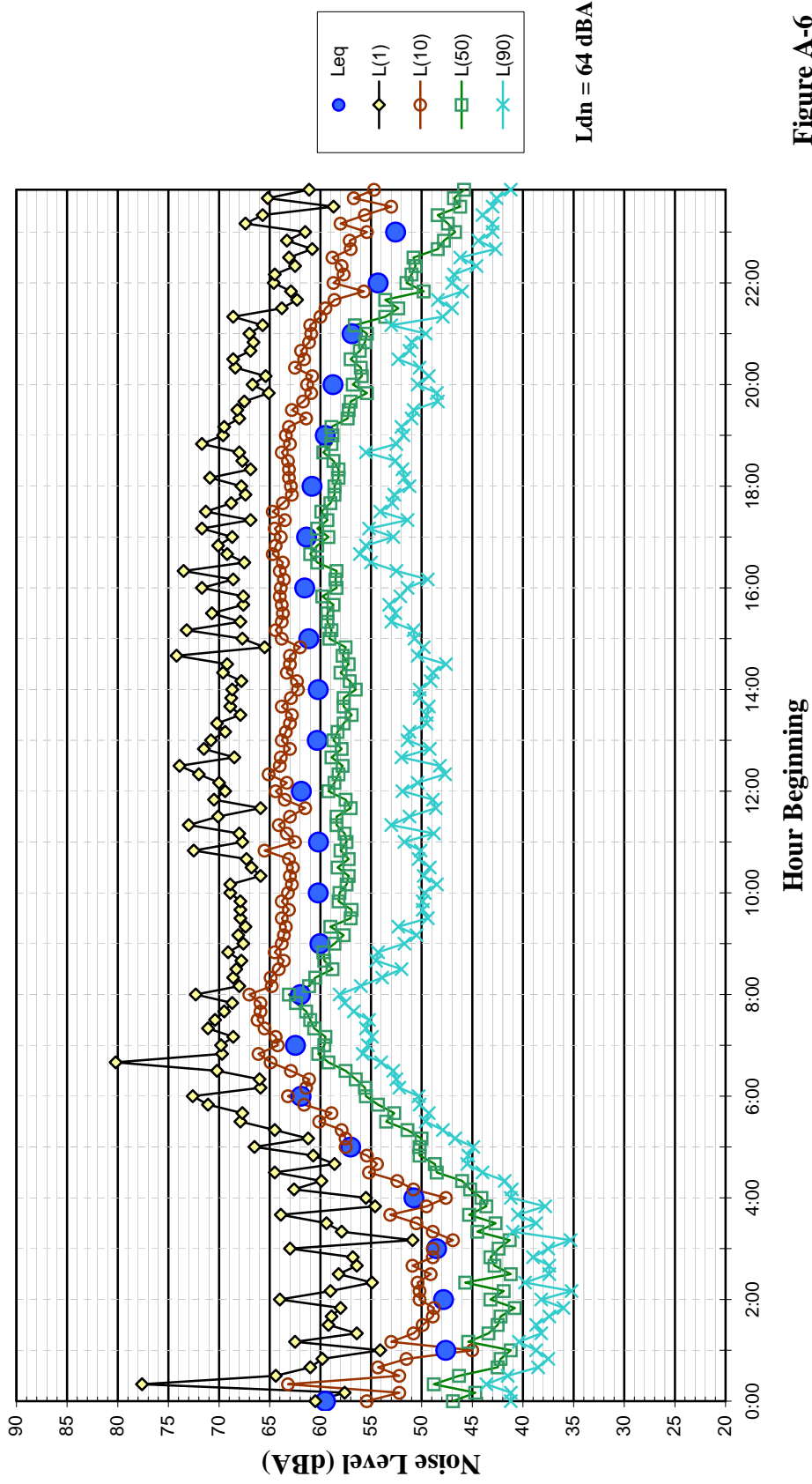


Figure A-6

**Noise Levels at LT-2
~135 feet from the Center of Healdsburg Avenue
Thursday, September 27, 2007**

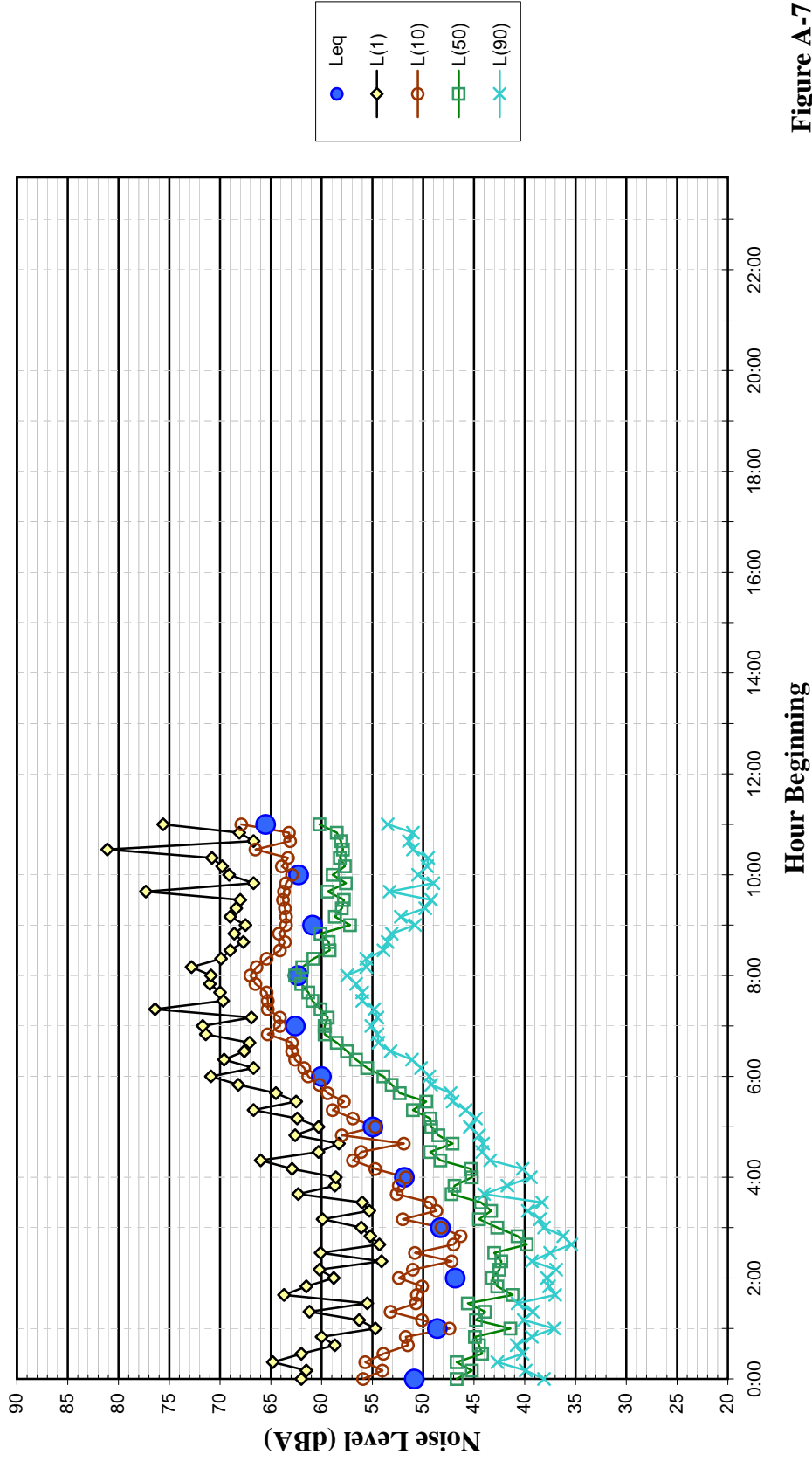


Figure A-7

**Noise Levels at LT-3
South Property Line of Badger Park
Thursday, September 27, 2007**

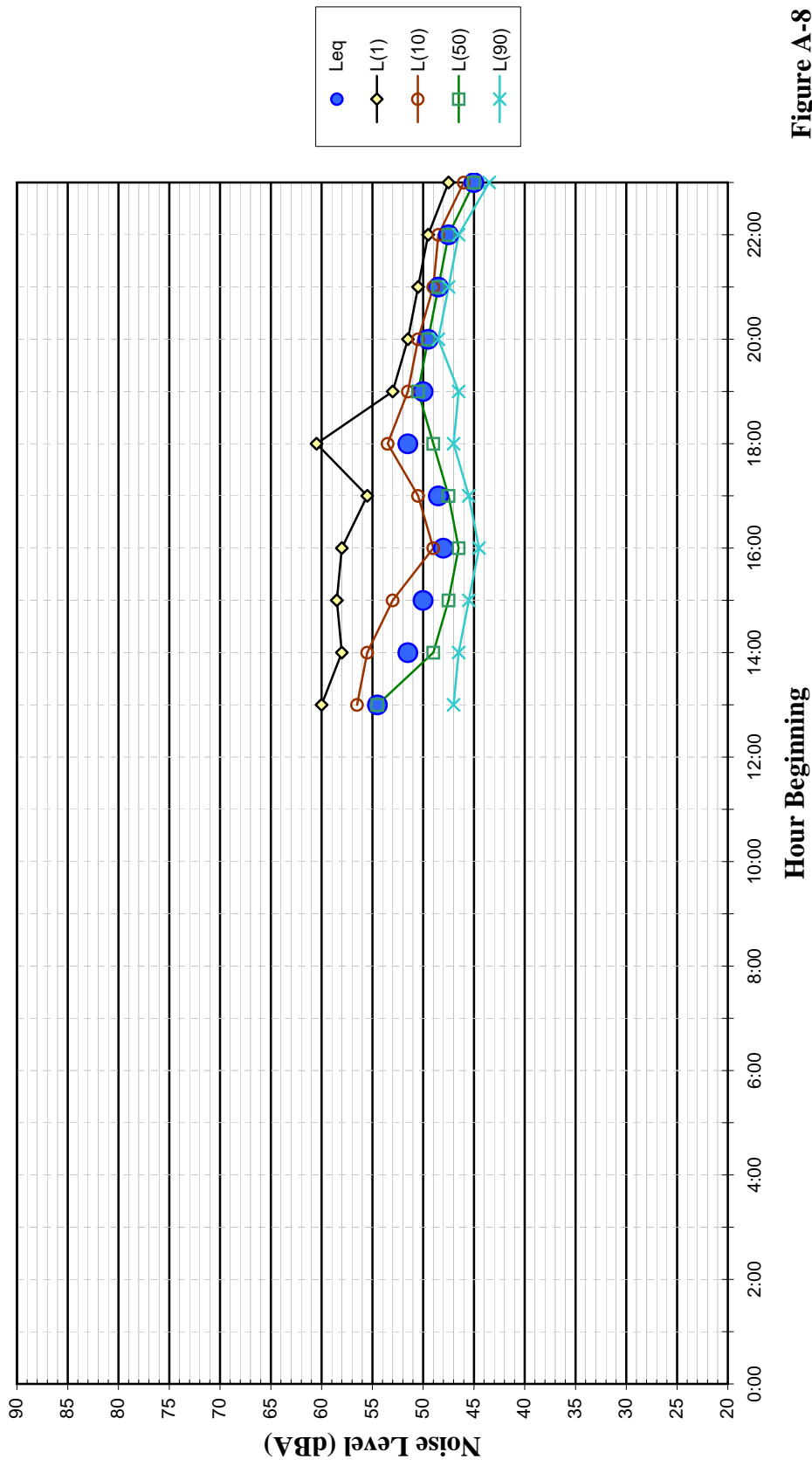


Figure A-8

**Noise Levels at LT-3
South Property Line of Badger Park
Friday, September 28, 2007**

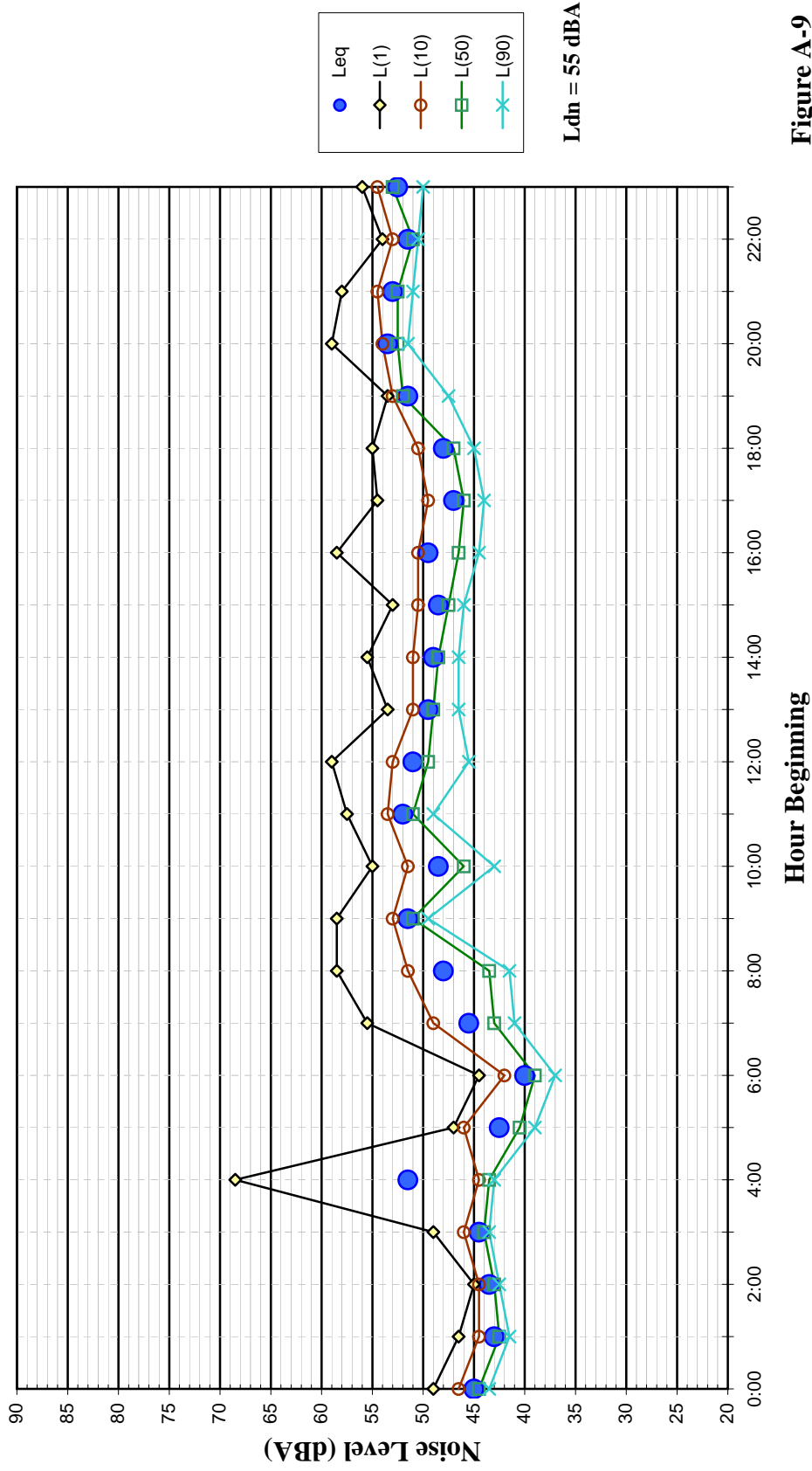


Figure A-9

**Noise Levels at LT-3
South Property Line of Badger Park
Saturday, September 29, 2007**

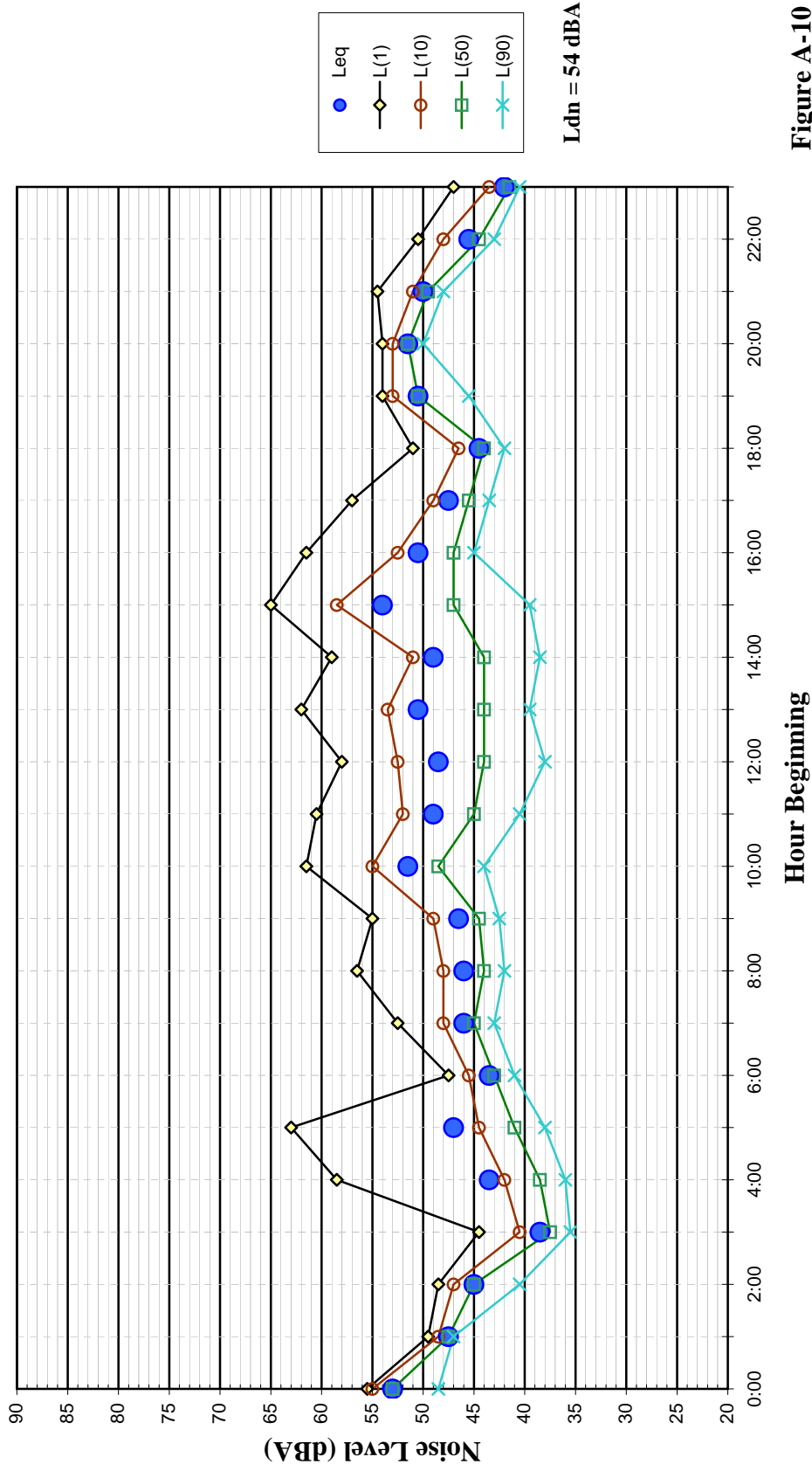


Figure A-10

**Noise Levels at LT-3
South Property Line of Badger Park
Sunday, September 30, 2007**

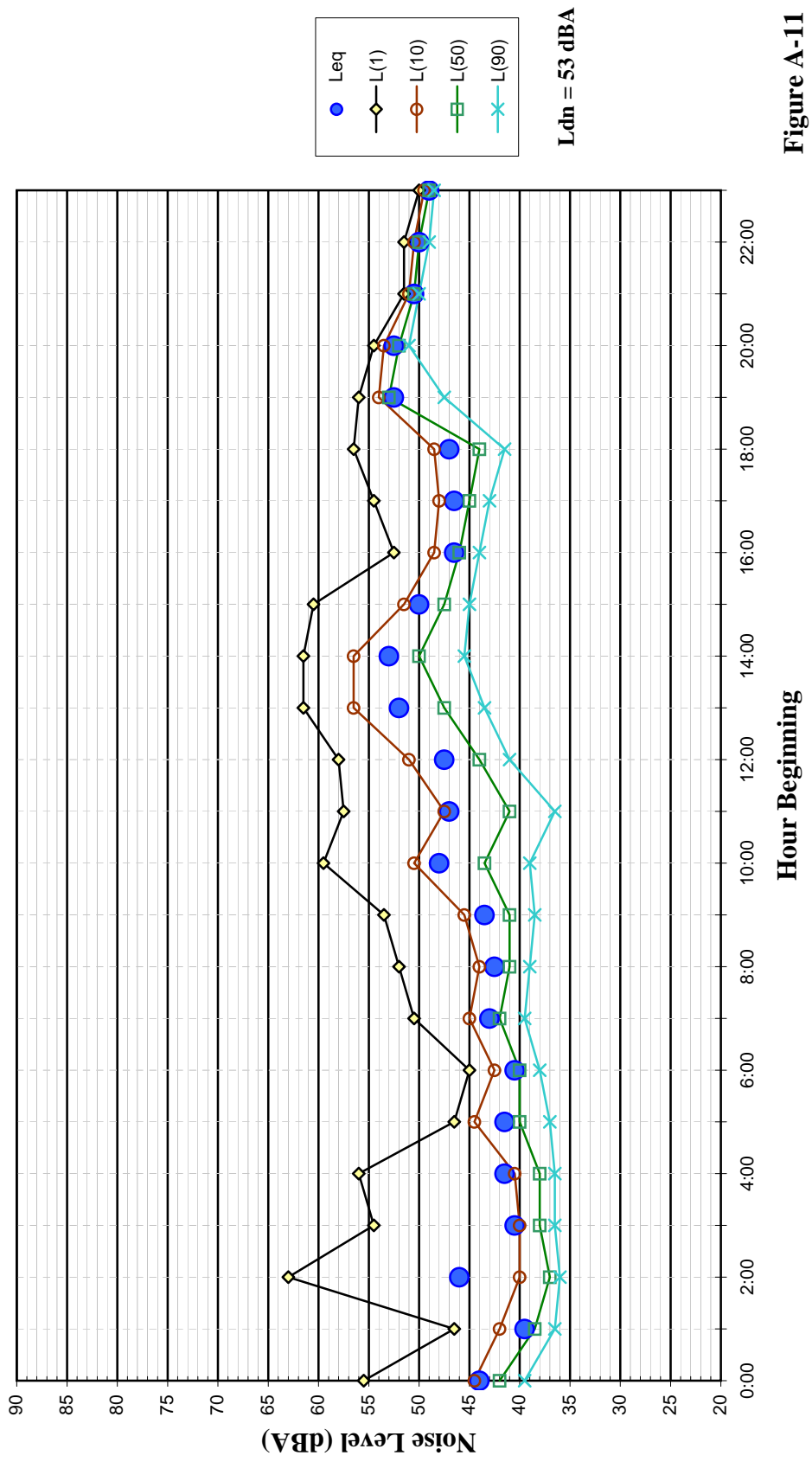


Figure A-11

**Noise Levels at LT-3
South Property Line of Badger Park
Monday, October 1, 2007**

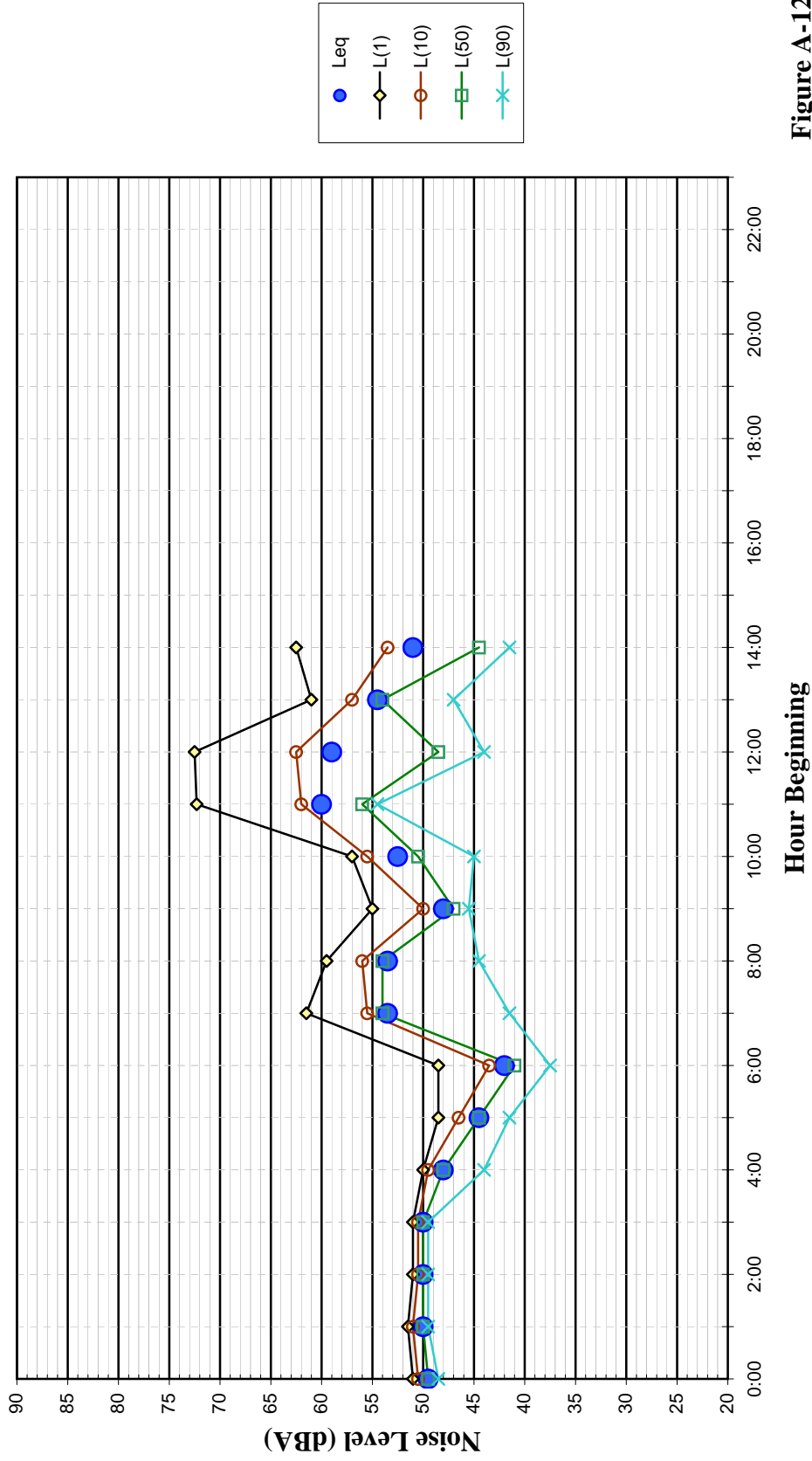


Figure A-12

**Noise Levels at LT-4
 ~50 feet from the Center of Matheson Street at Second Street
 Thursday, September 27, 2007**

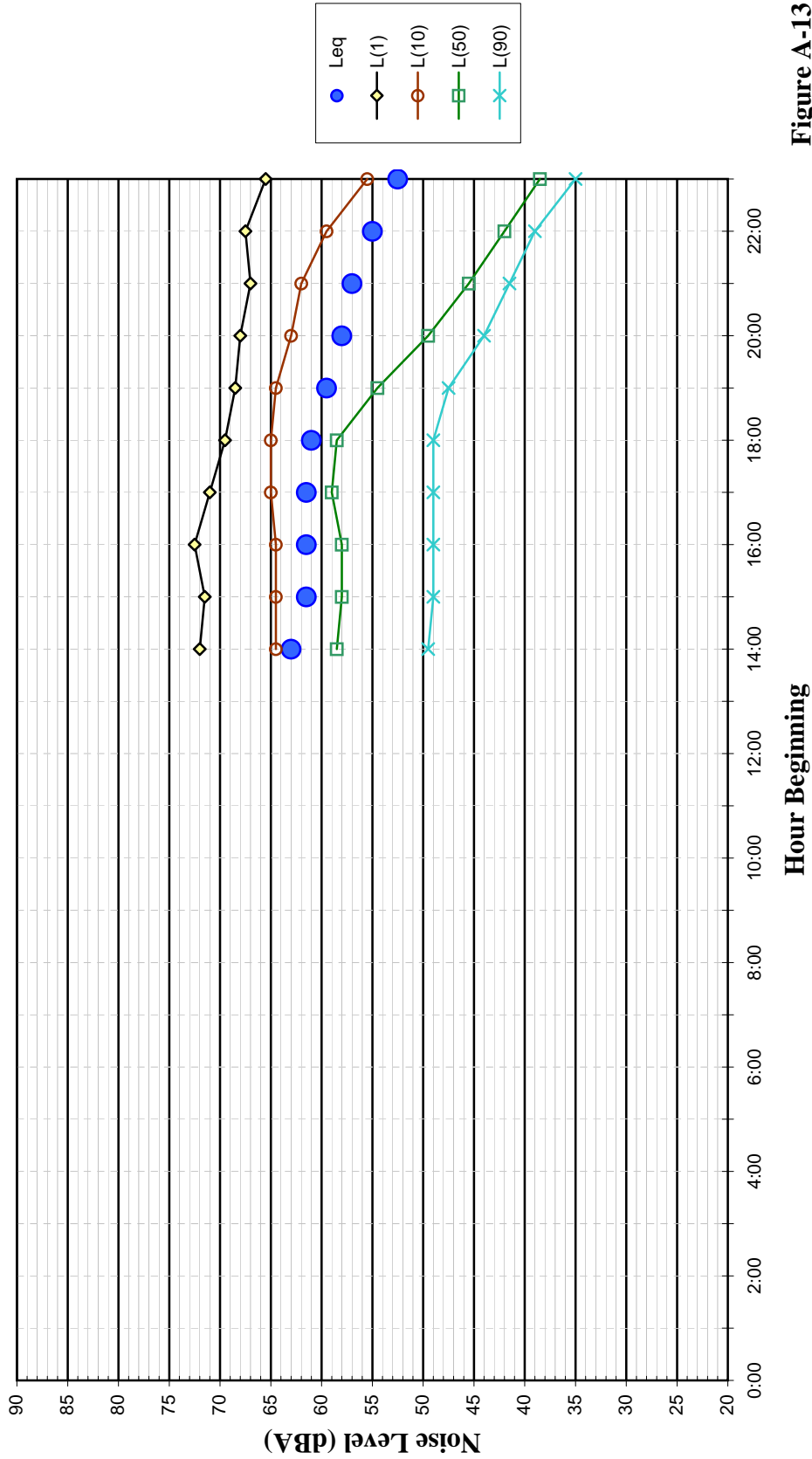


Figure A-13

**Noise Levels at LT-4
 ~50 feet from the Center of Matheson Street at Second Street
 Friday, September 28, 2007**

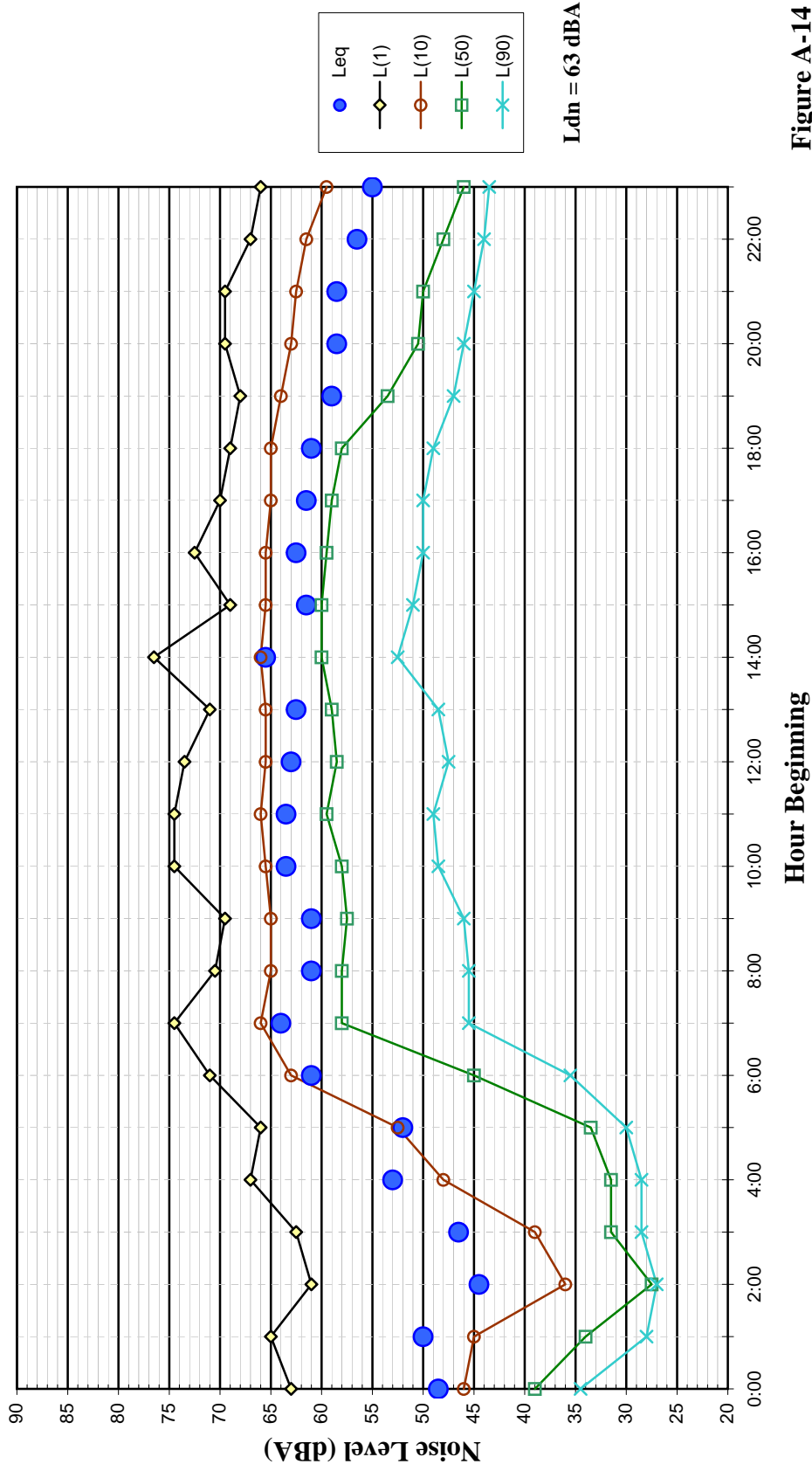


Figure A-14

**Noise Levels at LT-4
 ~50 feet from the Center of Matheson Street at Second Street
 Saturday, September 29, 2007**

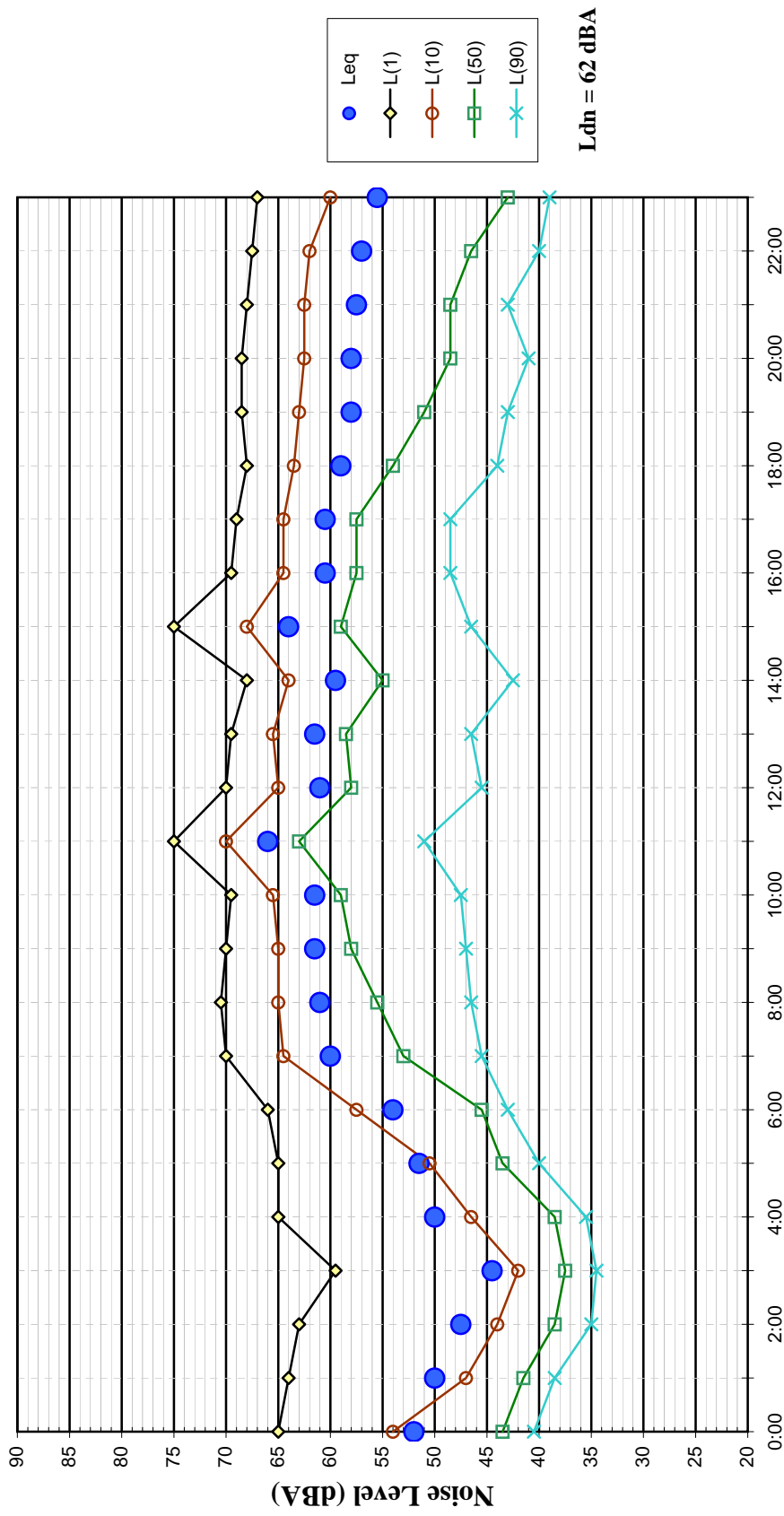


Figure A-15

**Noise Levels at LT-4
 ~50 feet from the Center of Matheson Street at Second Street
 Sunday, September 30, 2007**

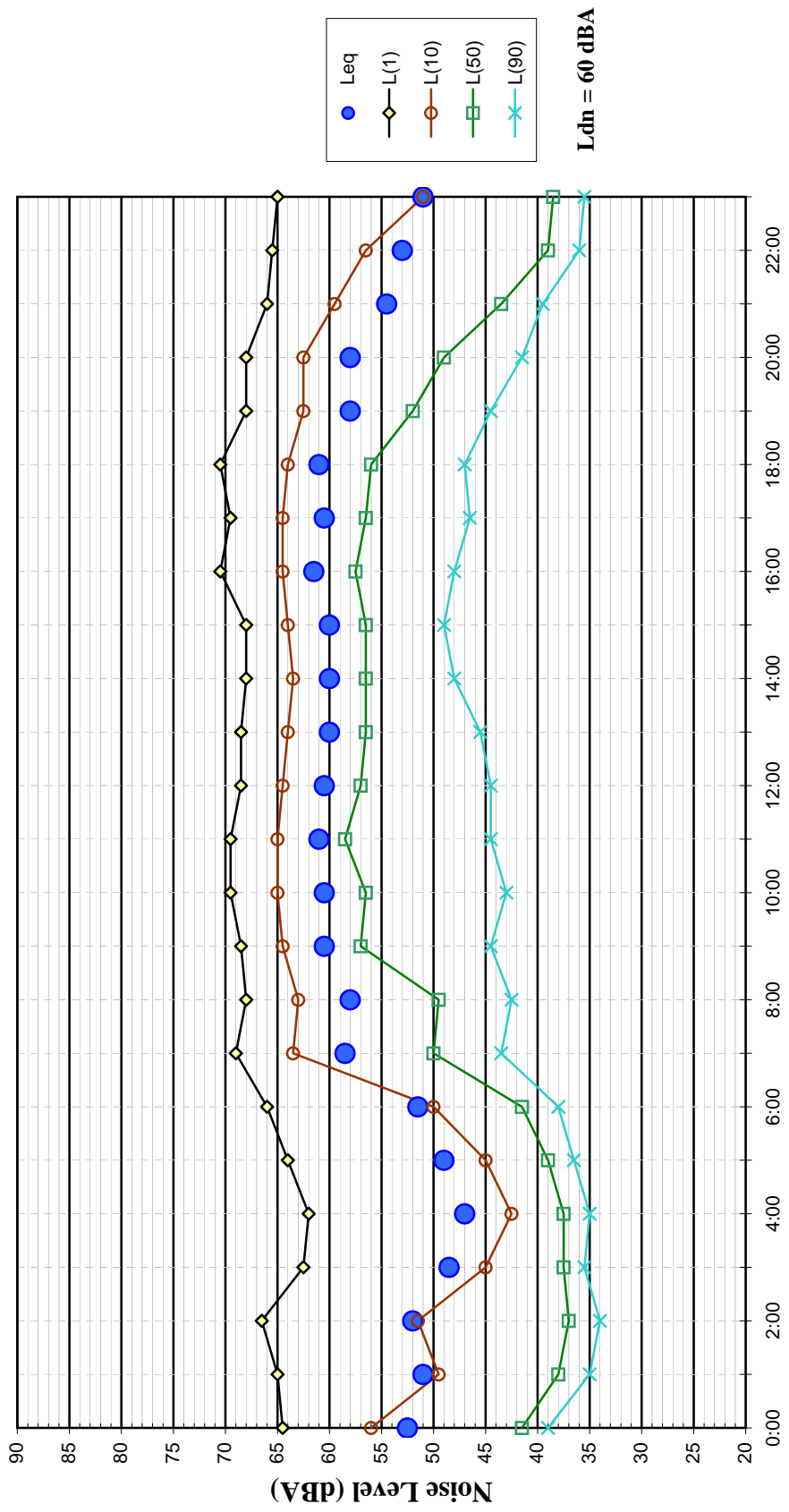


Figure A-16

**Noise Levels at LT-4
 ~50 feet from the Center of Matheson Street at Second Street
 Monday, October 1, 2007**

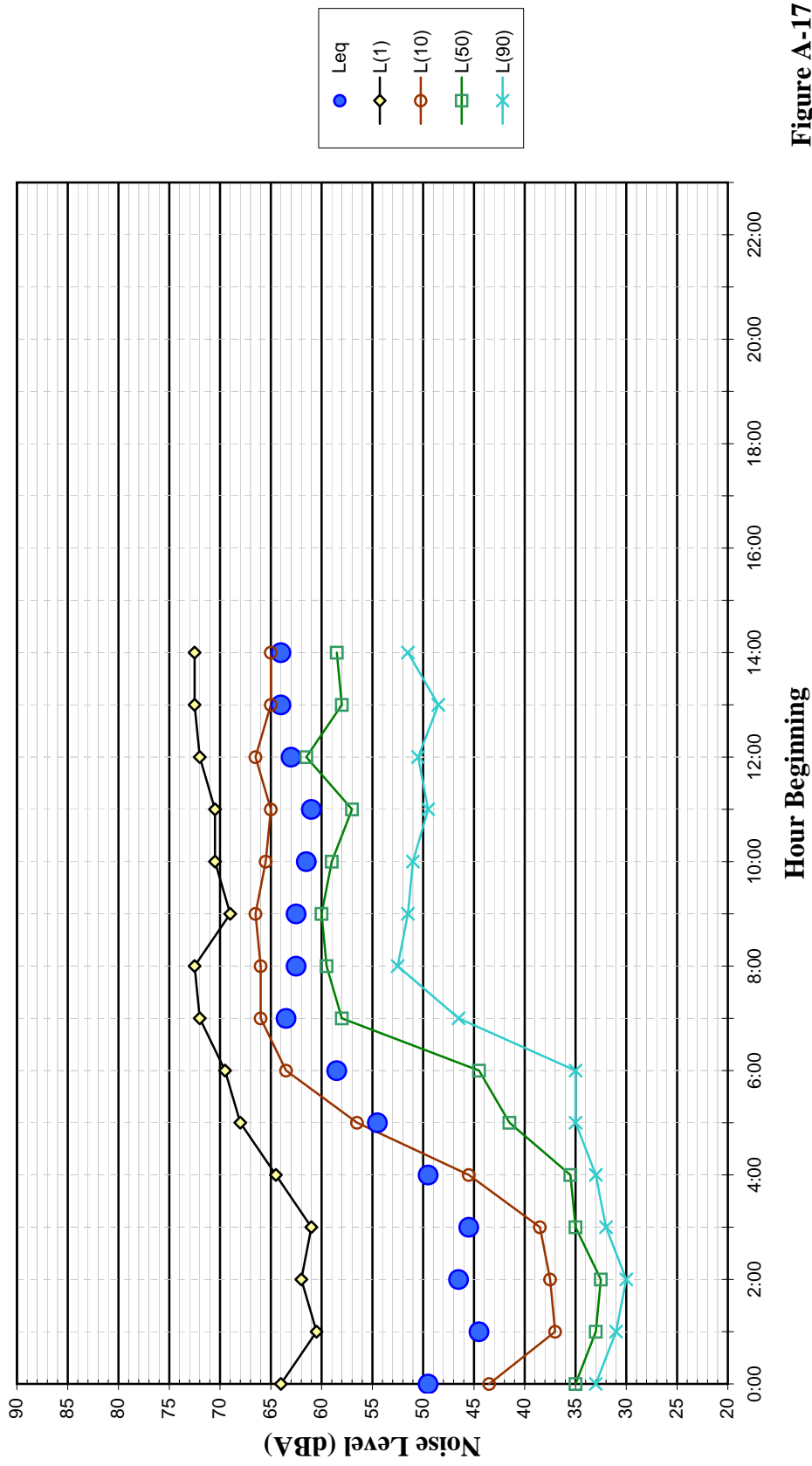


Figure A-17

**Noise Levels at LT-5
~90 feet from the Center of University Street at Lincoln Street
Thursday, September 27, 2007**

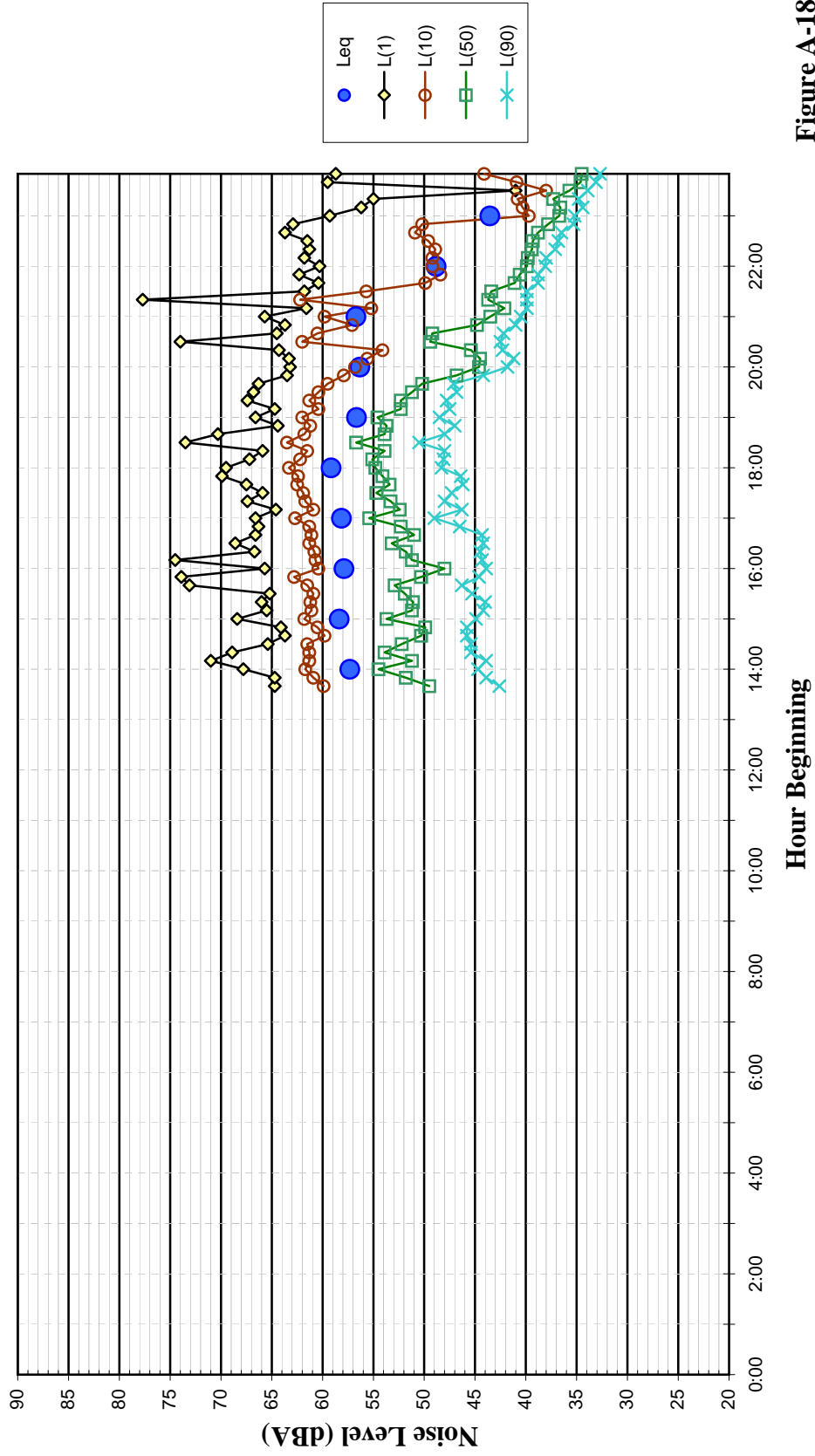


Figure A-18

**Noise Levels at LT-5
 ~90 feet from the Center of University Street at Lincoln Street
 Friday, September 28, 2007**

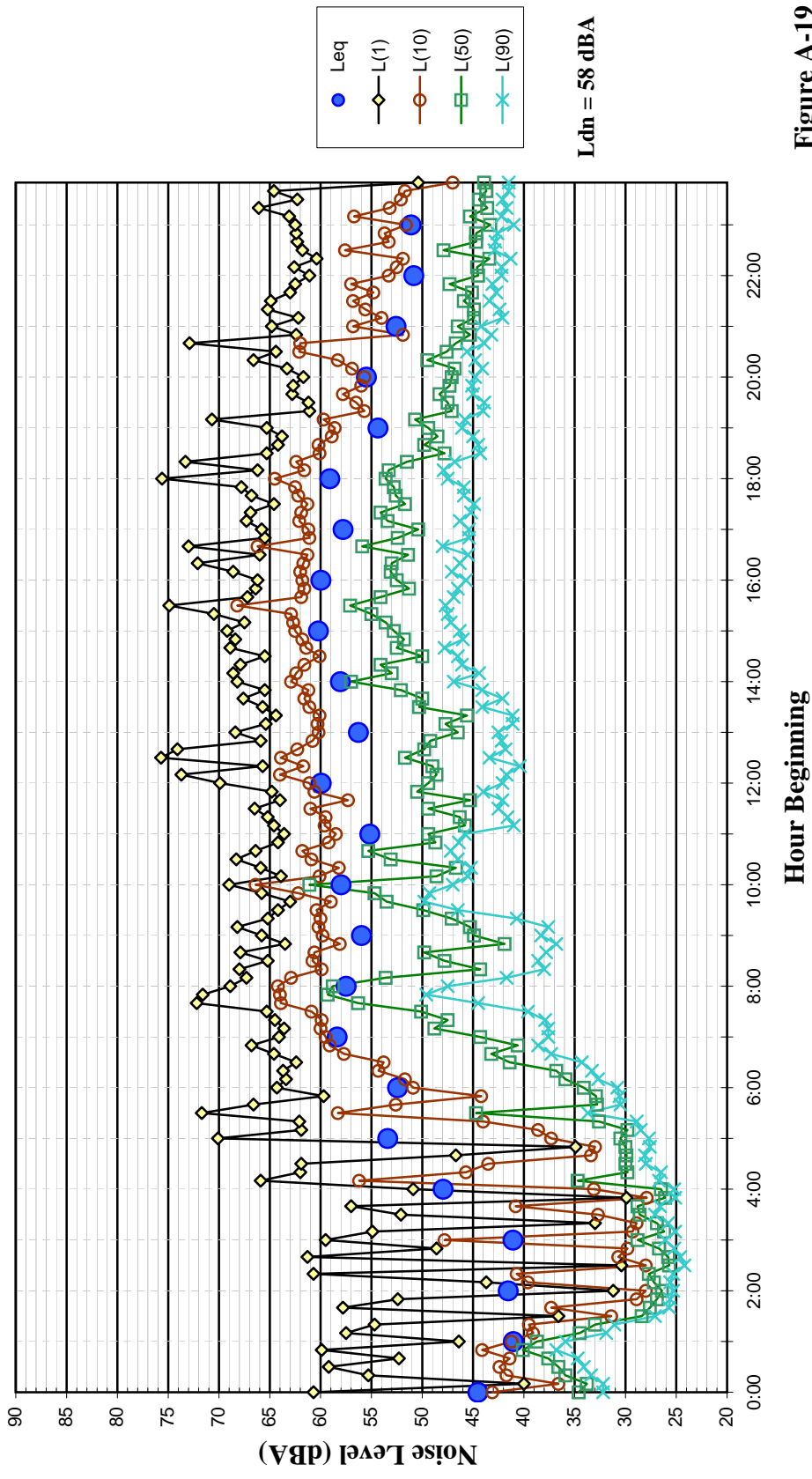


Figure A-19

**Noise Levels at LT-5
 ~90 feet from the Center of University Street at Lincoln Street
 Saturday, September 29, 2007**

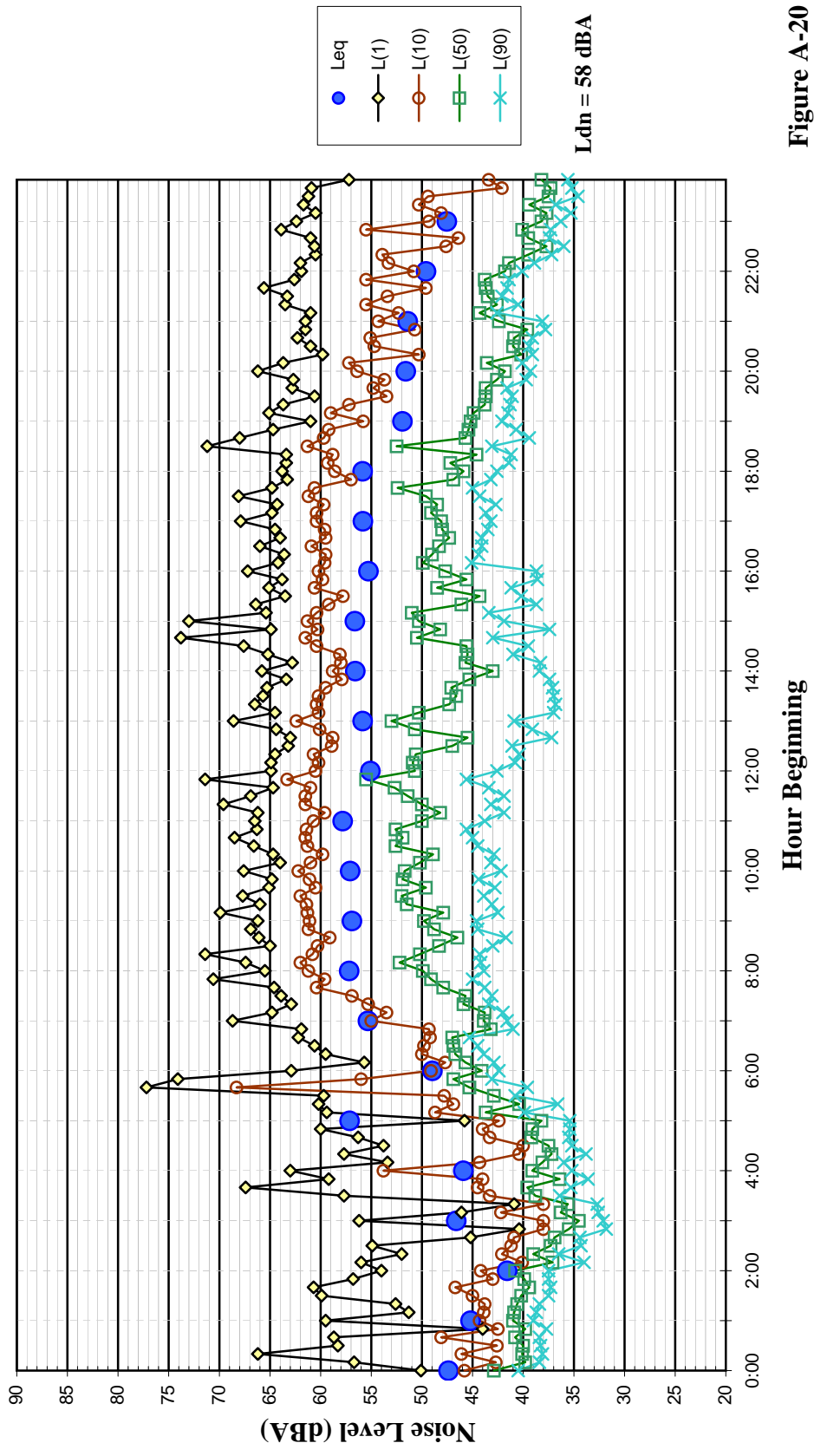


Figure A-20

**Noise Levels at LT-5
~90 feet from the Center of University Street at Lincoln Street
Sunday, September 30, 2007**

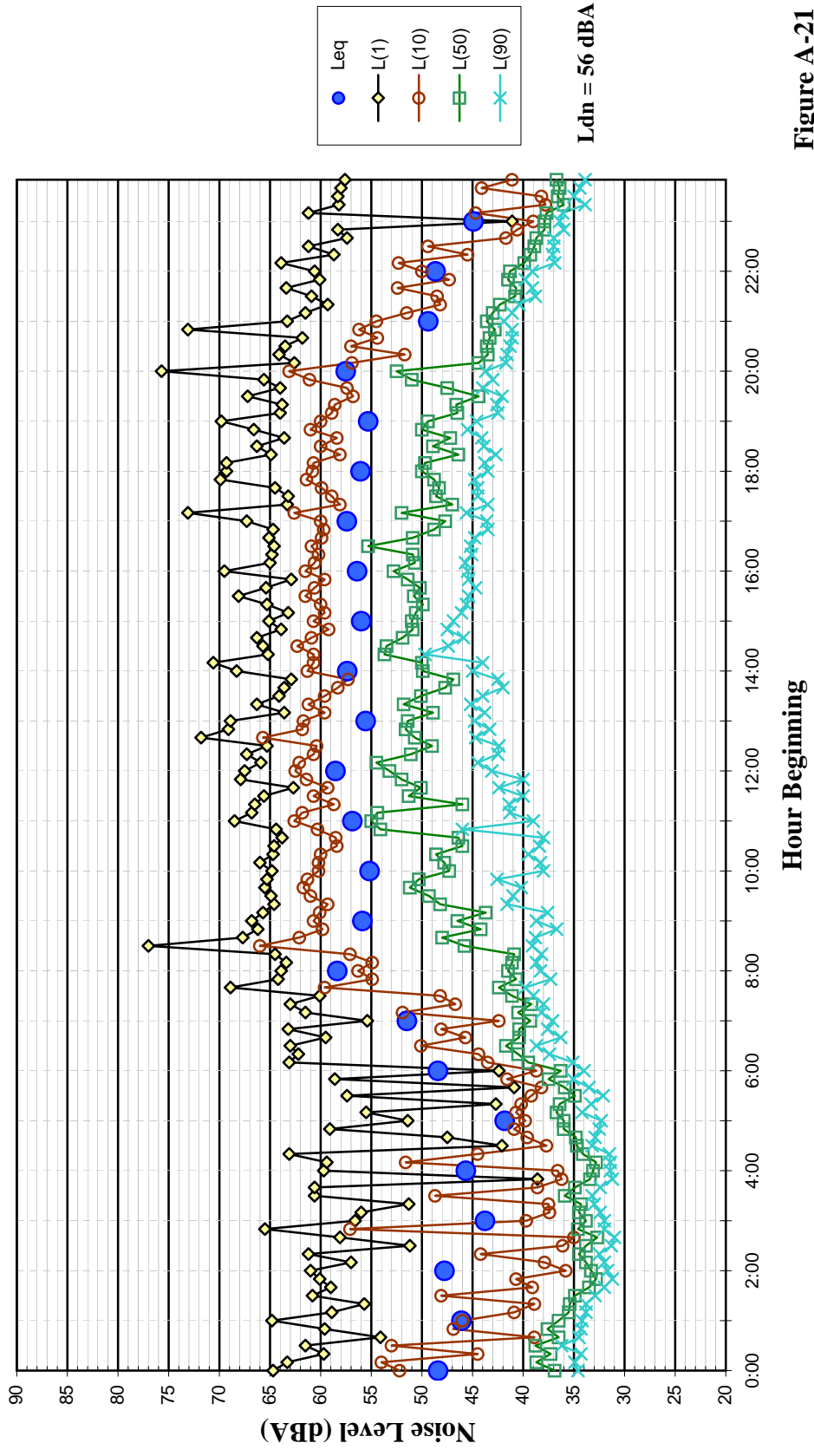


Figure A-21

**Noise Levels at LT-5
 ~90 feet from the Center of University Street at Lincoln Street
 Monday, October 1, 2007**

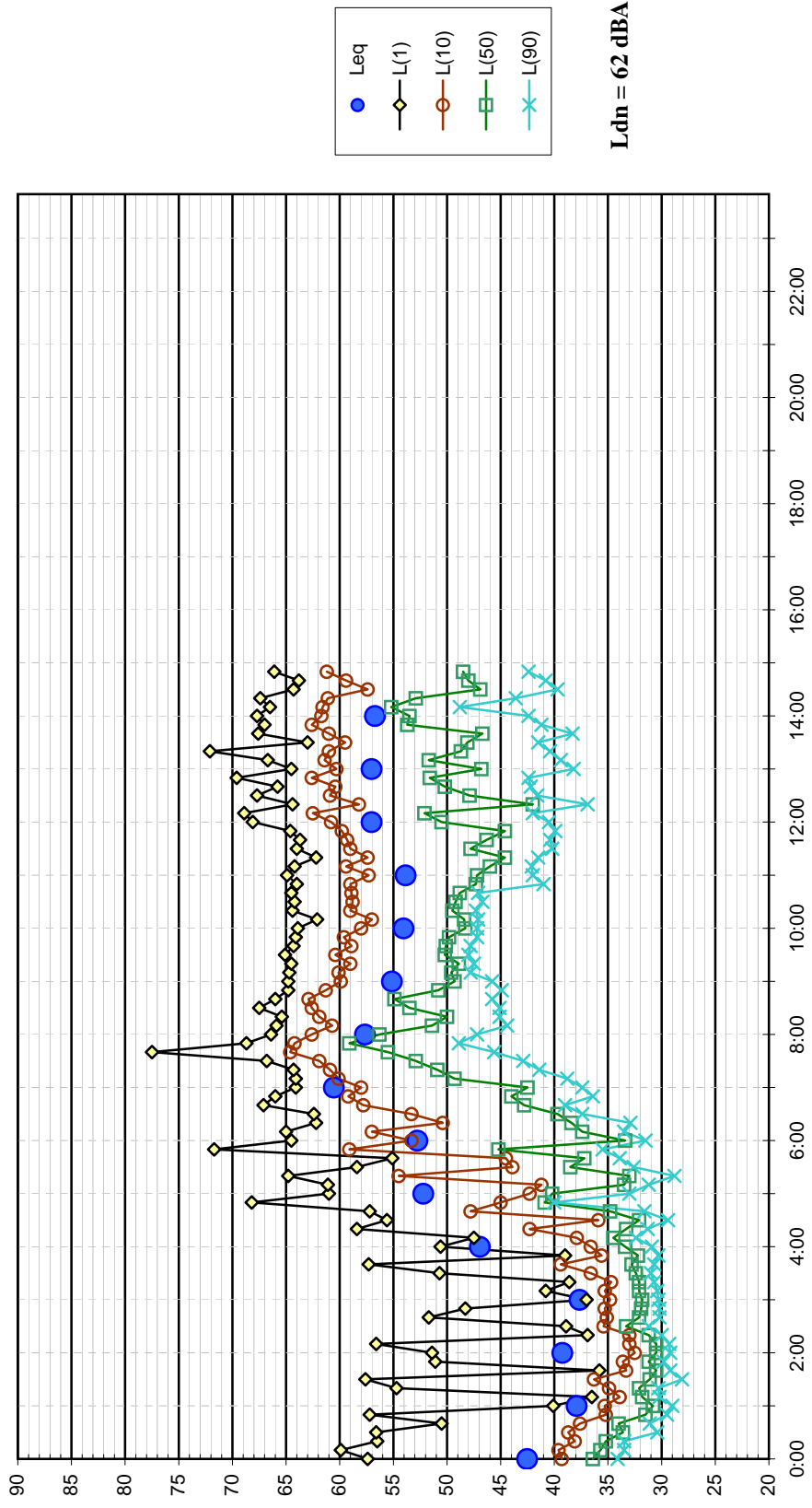


Figure A-22

**Noise Levels at LT-6
~50 feet from the Center of Powell at Brown Street
Thursday, September 27, 2007**

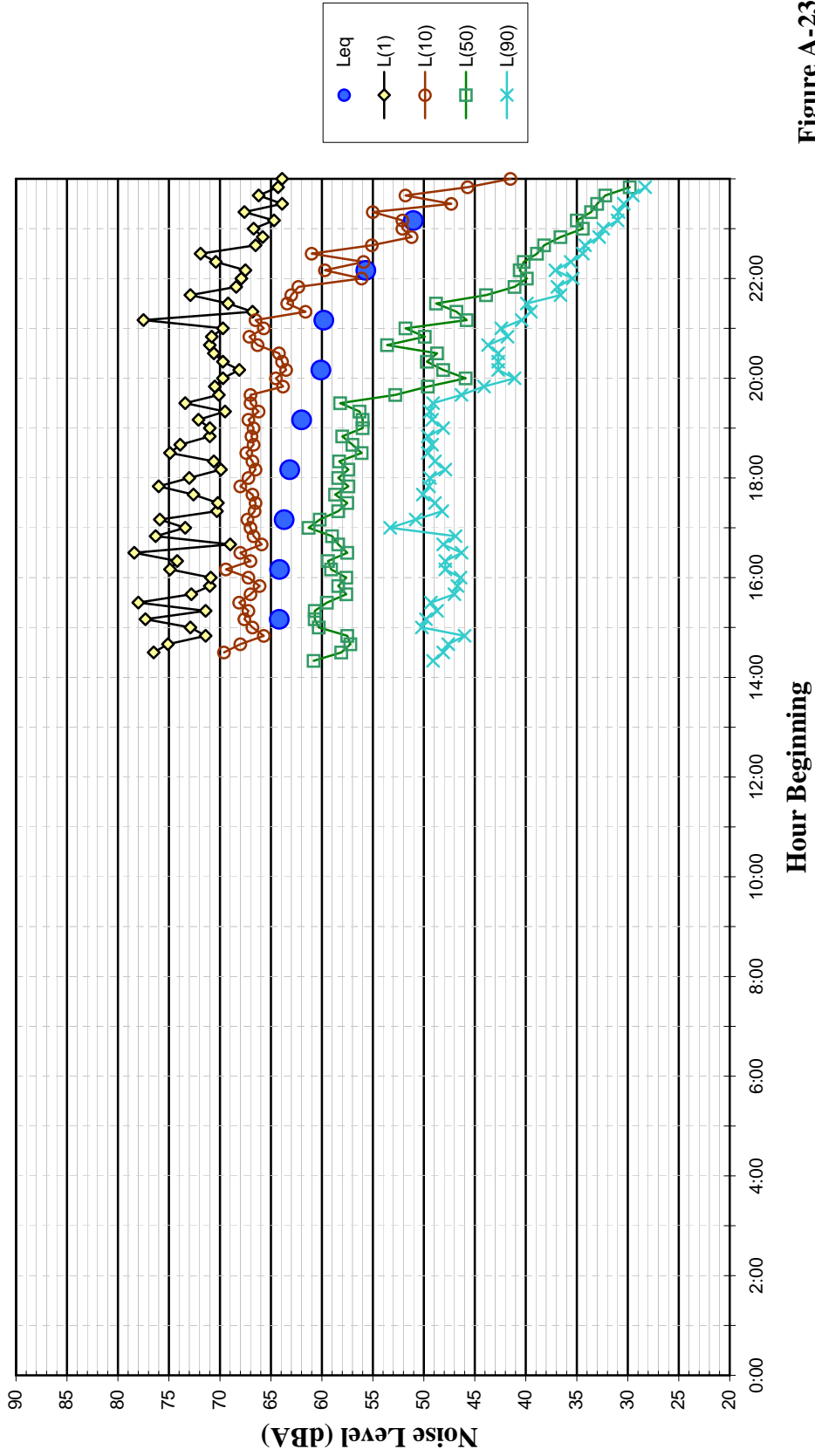


Figure A-23

**Noise Levels at LT-6
~50 feet from the Center of Powell at Brown Street
Friday, September 28, 2007**

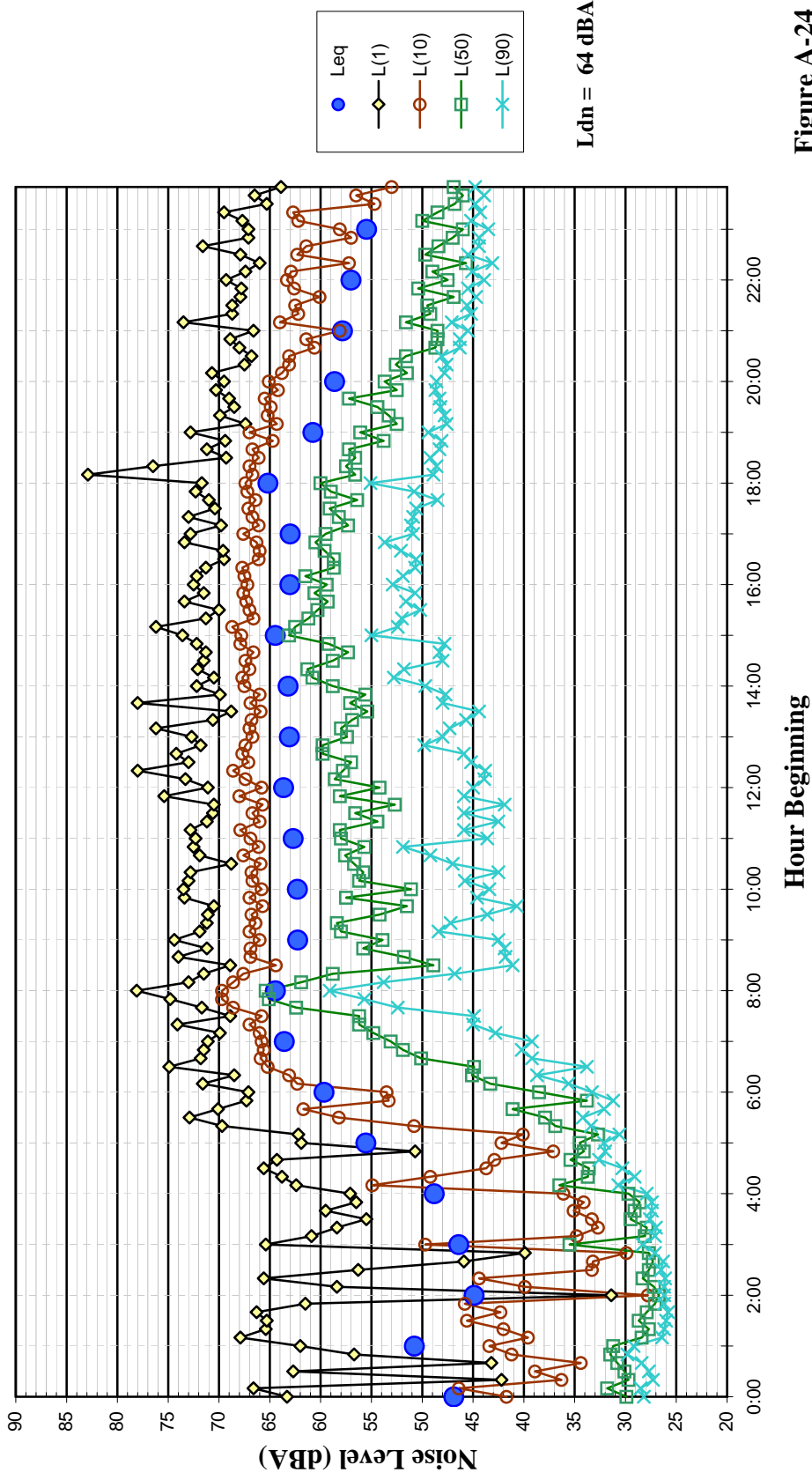


Figure A-24

**Noise Levels at LT-6
~50 feet from the Center of Powell at Brown Street
Saturday, September 29, 2007**

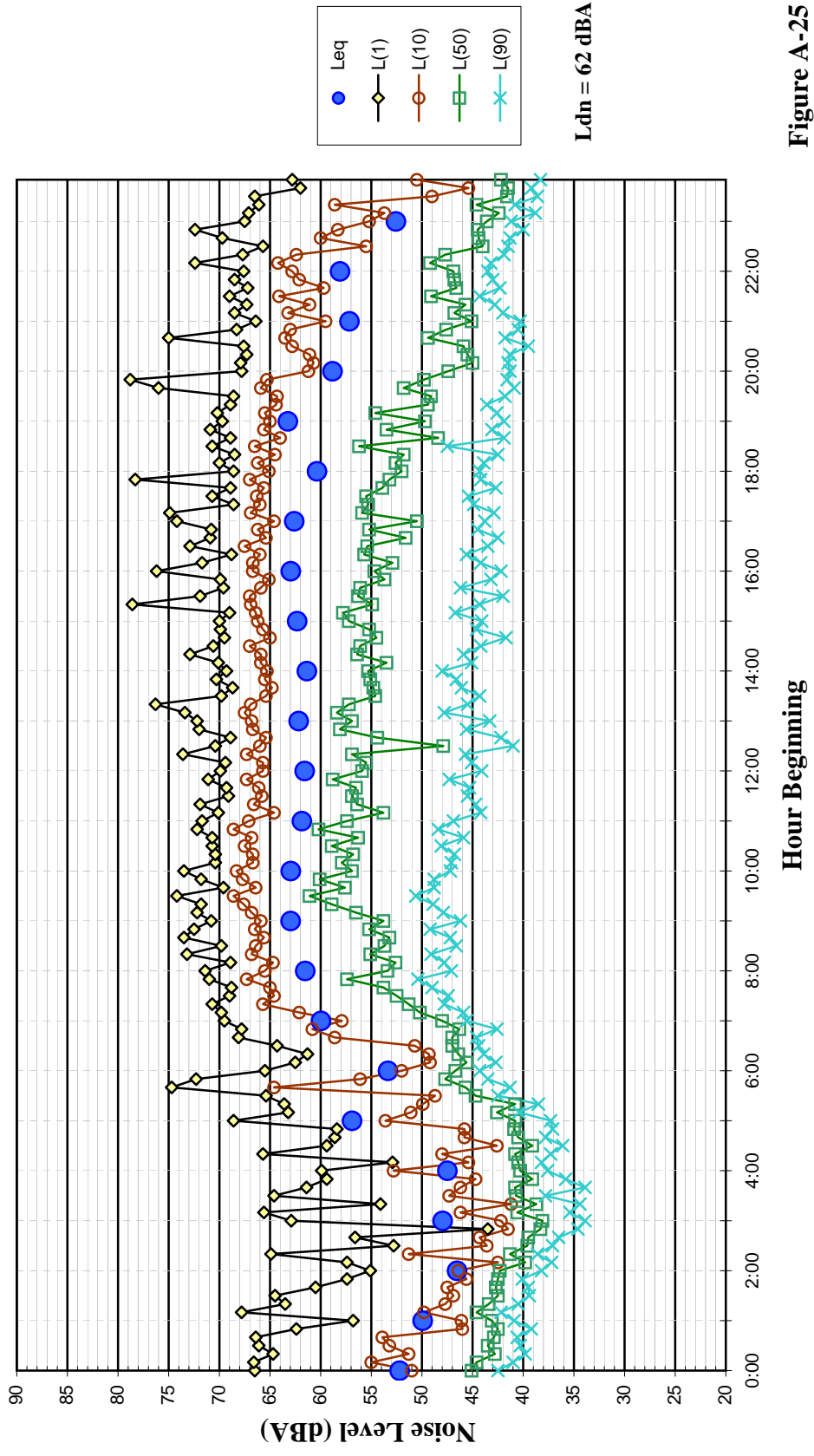


Figure A-25

**Noise Levels at LT-6
~50 feet from the Center of Powell at Brown Street
Sunday, September 30, 2007**

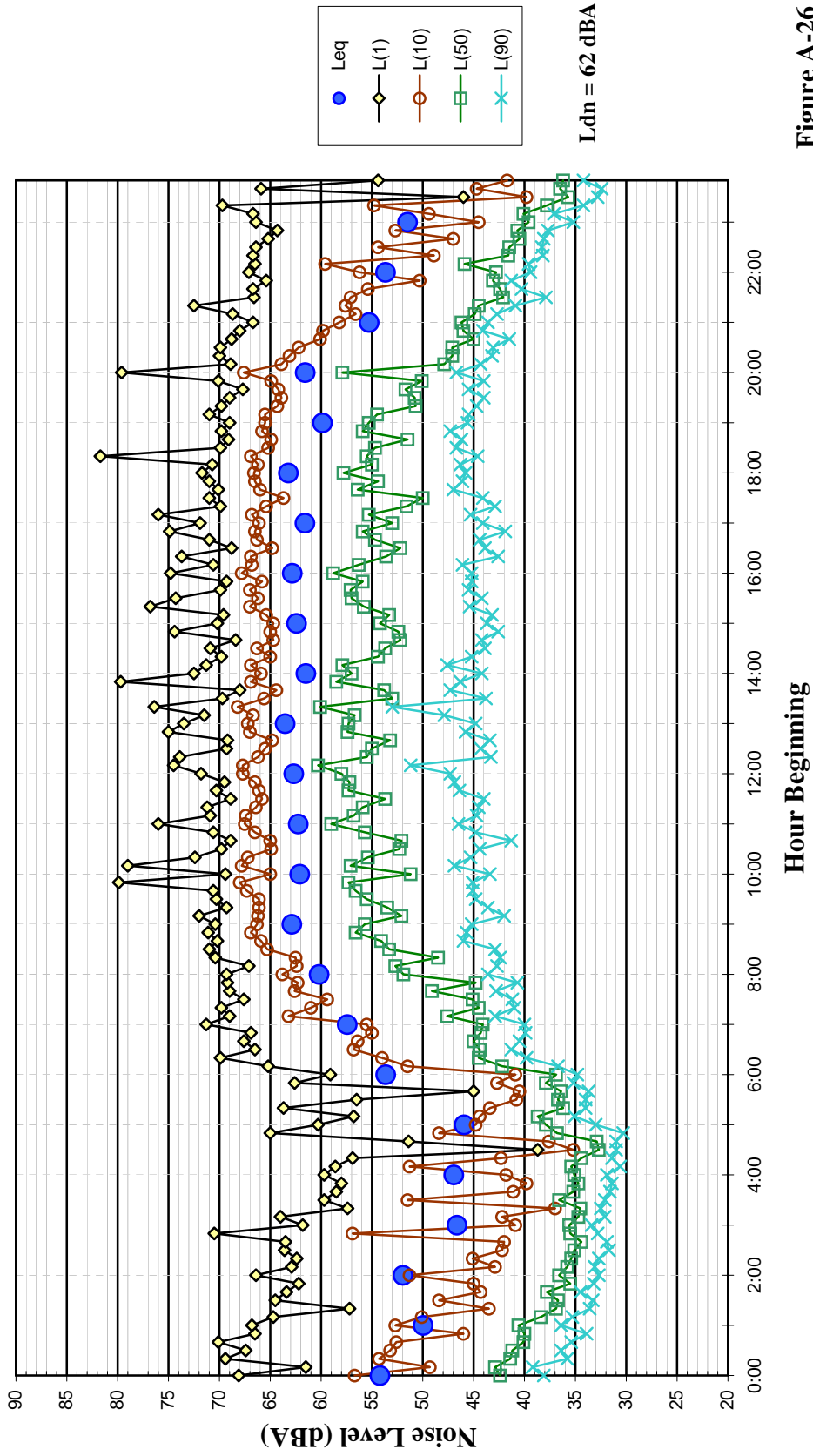


Figure A-26

**Noise Levels at LT-6
~50 feet from the Center of Powell at Brown Street
Monday, October 1, 2007**

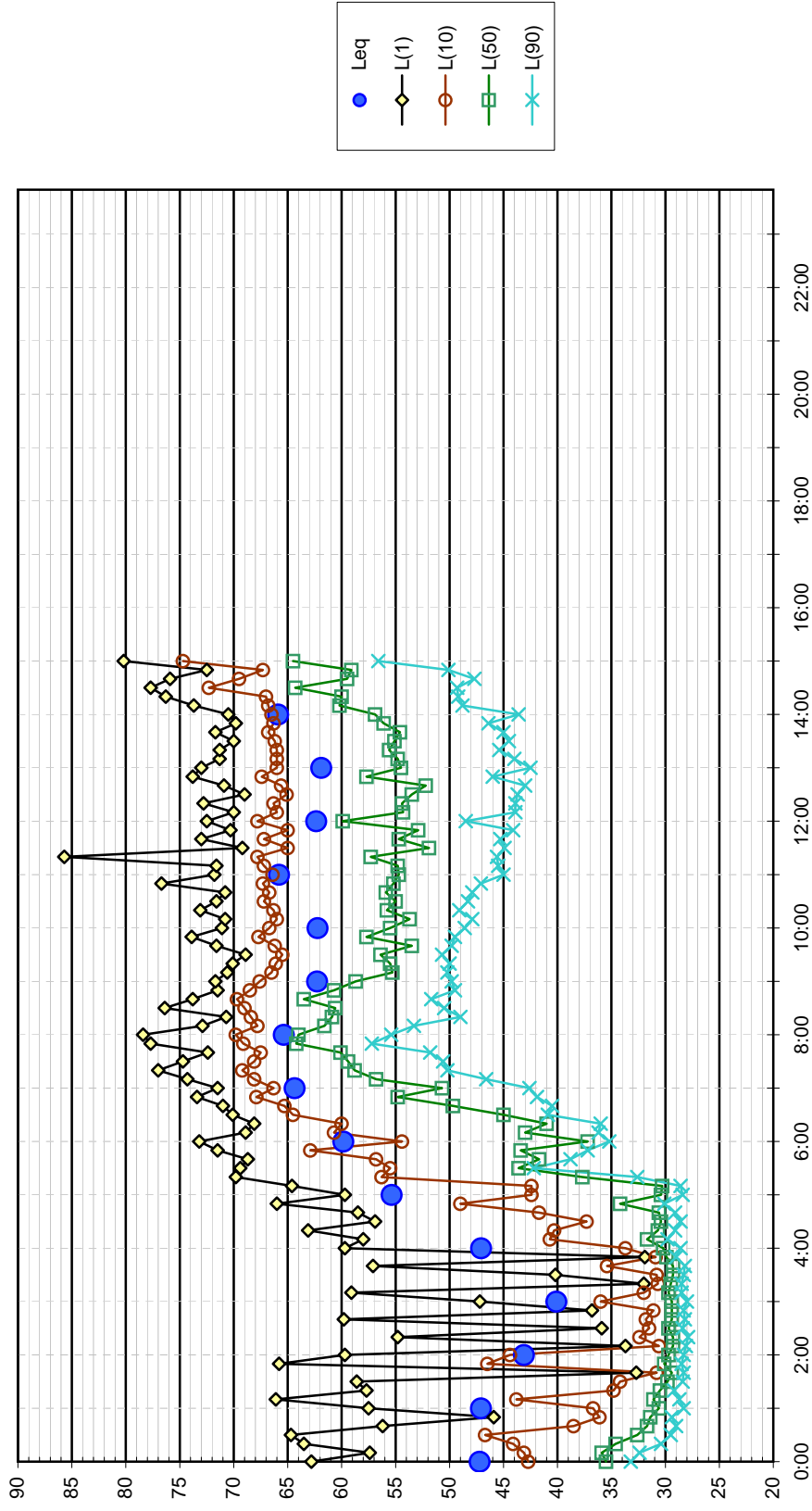


Figure A-27